



Make the most of your journey!

- Rent camping equipment
- Book “pre & post” excursions

No need to haul everything over the ocean! Participants and IST will be able to rent camping equipment during their visit to Iceland.

We also recommend that you use the opportunity to extend your stay, either before or after the Jamboree, to make your experience even more unforgettable!

In this leaflet you will find information about the equipment rental, and the “pre & post” opportunities you can book for your trip.

Prices and booking deadlines for the equipment, coach transfers and “pre & post” stays and excursions will be available soon.

Equipment rental

Save yourself the hassle and cost of bringing all your equipment to Iceland. You can rent things like tents and cooking gear during, before or after the jamboree. With three pick-up and drop-off locations, you will have the flexibility you will need to customize your trip.

Available camping equipment will include:

Sleeping tents

Asivik Wilderness 4 or similar
(3-4 person tent)



Sleeping bags and mats

Sleeping bag: 3 season
Mats: Closed cell foam



Table and benches

1 table, 2 benches
Suitable for 8 people



Kitchen pack

Cooking stove, cooking equipment and tableware for 10 people
(Smaller packs available for IST)



Cooking shelter

Tarp-and-poles type shelter
(Not recommended as only shelter)

Kitchen/group tent

Sturdy tent, suitable for the Icelandic weather
(Highly recommended for every group)





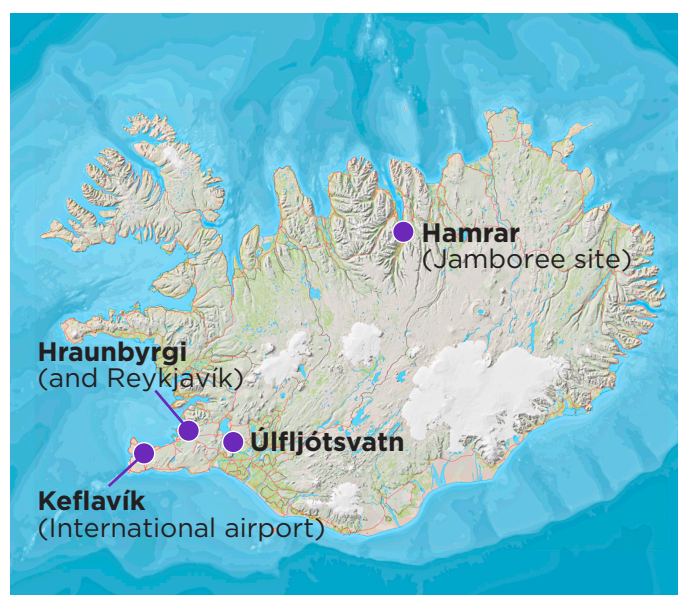
Icelandic National Jamboree 2026 • Equipment and Excursions Information #1

How to get around?

Most flights will arrive at Keflavík international airport, about a 5 hour drive from the Jamboree site.

In some cases, flights to Akureyri airport will be available, just a few minutes from Hamrar.

We can arrange for a coach for your group to and from the airports, and for most transfers before and after the Jamboree.



Pre & post stays and excursions

You're planning a trip to Iceland. Why not add a few days before or after the Jamboree and create even more adventures and memories?

Pre- and post stays are available at three locations:

- **Hamrar Scout Centre** (Jamboree site)
- **Úlfjótssvatn Scout Centre** (National Scout Centre of Iceland)
- **Hraunbyrgi Scout Centre** (Capital area)

See next page for more information on each centre.

All bookings for equipment and pre & post will be managed by Úlfjótssvatn Scout Centre. Further information will be available soon.

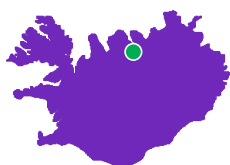


Icelandic National Jamboree 2026 • Equipment and Excursions Information #1

Hamrar Scout Centre

The Jamboree site is within walking distance of Akureyri, often called "the Capital of the North". Hamrar is run by scouts and is one of the largest public campsites in Iceland.

A great basecamp for your North-Iceland explorations!



www.hamrar.is

Accommodation:

- Camping
- Scout huts in the area

Excursions available:

- Whale watching
- Zip-line
- Day trip to Húsavík
- "Diamond Circle" excursion
- River rafting on a glacial river
- Geothermal bathing lagoons
- Museums and exhibitions
- Waterfalls and hot springs
- On-site Lazer-tag, abseiling and boats
- ... and more!



Úlfjótstvatn Scout Centre

The national Scout centre of Iceland and the hosting site for the 2017 World Scout Moot.

Located by lake Úlfjótstvatn, at the heart of the "Golden Circle" and an hour's drive from Reykjavík city, Úlfjótstvatn is the home-base for Icelandic scouts.

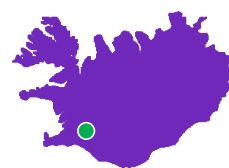


Accommodation:

- Camping
- Indoors (up to 66 guests)
- Catering available if pre-ordered

Excursions available:

- Whale watching
- Horse riding
- Glacier hike
- "Golden Circle" excursion
- River rafting on a glacial river
- Hike to a geothermal bathing river
- On-site archery, climbing and kayak sessions
- Day tour to Reykjavík
- ... and more!



www.ulfjotstvatn.is

Hraunbyrgi Scout Centre

Located in Hafnarfjörður, an adjacent town to Reykjavík city, Hraunbyrgi offers proximity and ease for those wanting to explore the culture and sites of the northernmost capital in the world. Less than an hour from Keflavík International airport.



www.lavahostel.is

Accommodation:

- Camping
- Hostel (up to 80 guests)

Excursions available:

- Whale watching
- Horse riding
- Glacier hike
- "Golden Circle" excursion
- River rafting on a glacial river
- Hike to a geothermal bathing river
- The Blue lagoon and Sky lagoon
- ... and more!

